



UNLEASHING ARCHIVES

Engaging with our collections



WHO ARE WE?

Noel Butlin Archives

Business and labour records from Australian companies, trade unions, industry bodies and professional organisations.

Records date from 1820s to early 2000s.

Significant collections include Australian Agricultural Co, CSR, Tooth & Co, pastoral stations, and trade unions covering workers in maritime industries, mining, transport, agriculture, construction, education, health, manufacturing, media, textiles, automotive industries, retail and various white-collar industries.



WHO ARE WE?

University Archives

Records of the ANU and its predecessor Canberra University College.

Includes records of ANU Council and other ANU committees, departmental / school / college records, correspondence, photos, plans, annual reports, publications such as ANU Reporter & Woroni, staff and student files, papers of academics and senior ANU staff.



WHO ARE WE?

Pacific Research Archives

The premier Australian centre for research and teaching resources on the Pacific.

Records from and about the Pacific including records of companies and trade unions which operated in the Pacific and records of anthropologists, linguists, geographers and historians who lived and worked in the Pacific.

Collection strengths are PNG and Fiji, but also records from Vanuatu, Samoa, Solomon Islands, Kiribati, Banaba, New Caledonia and Tonga.



WHO ARE WE?

National AIDS Archive

Established in 1992.

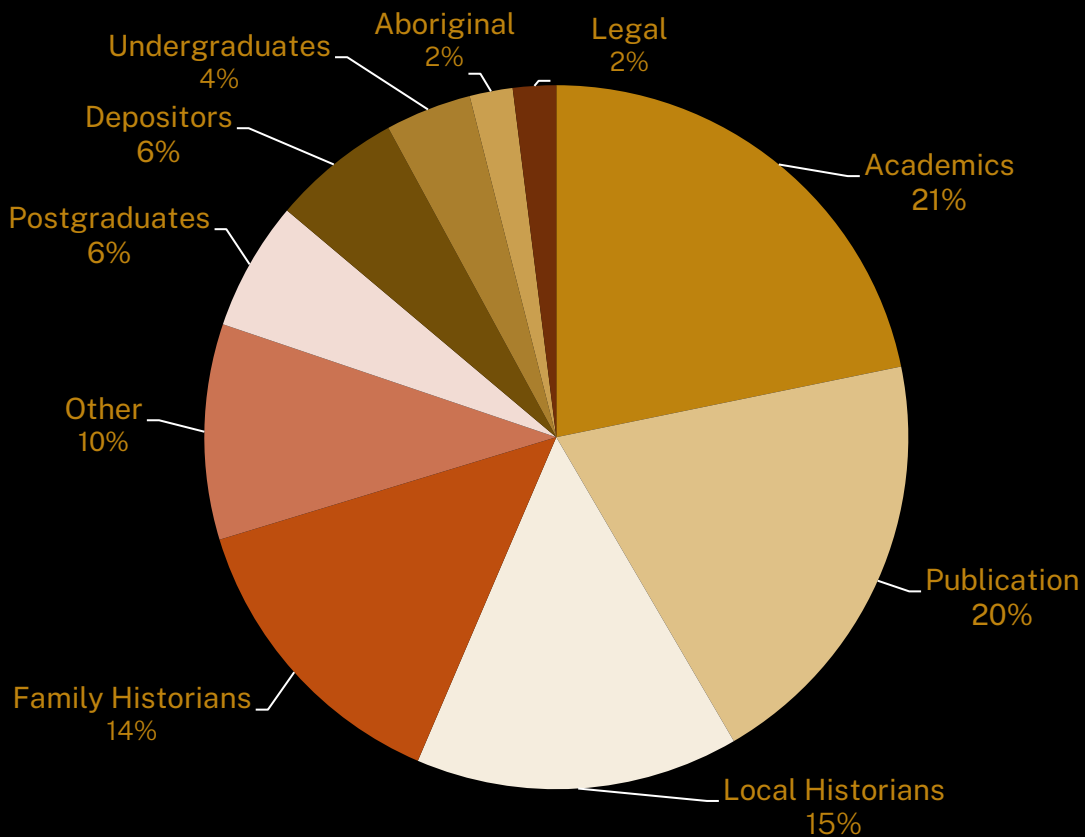
Documents the history of HIV and AIDS education and prevention across Australia.

Records from government agencies, community-based organisations and individuals including the Australian Federation of AIDS Organisations, AIDS Action Council, AIDS Trust of Australia, and The Scarlet Alliance.

Includes correspondence, reports, conference papers, policy papers, minutes, media clippings, posters, audio-visual material and publications.

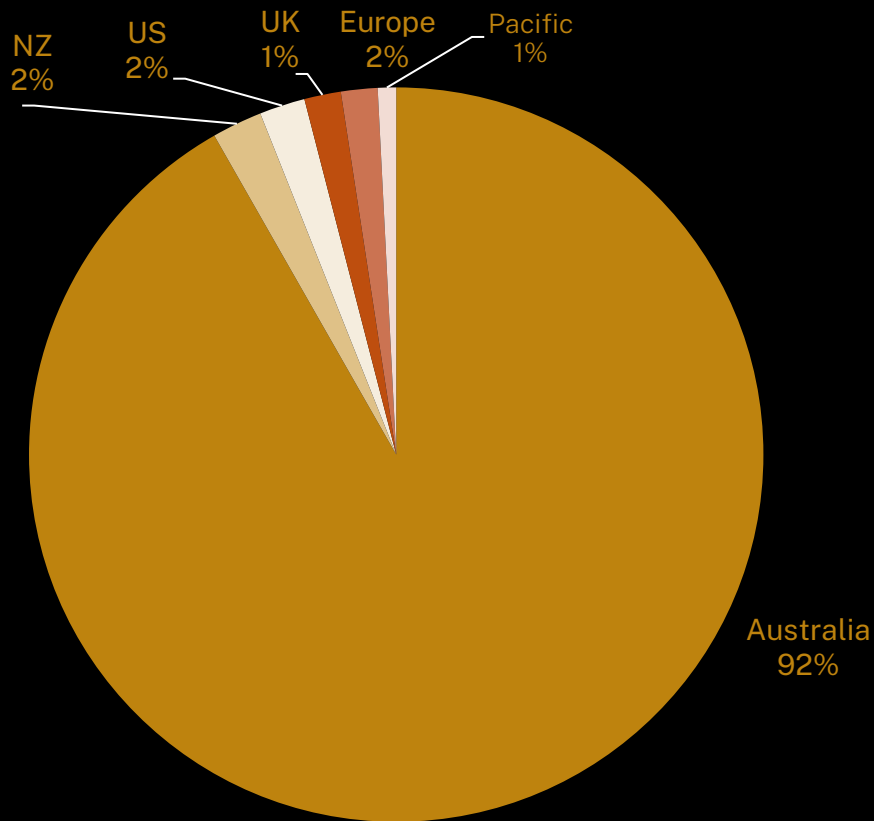


OUR USERS



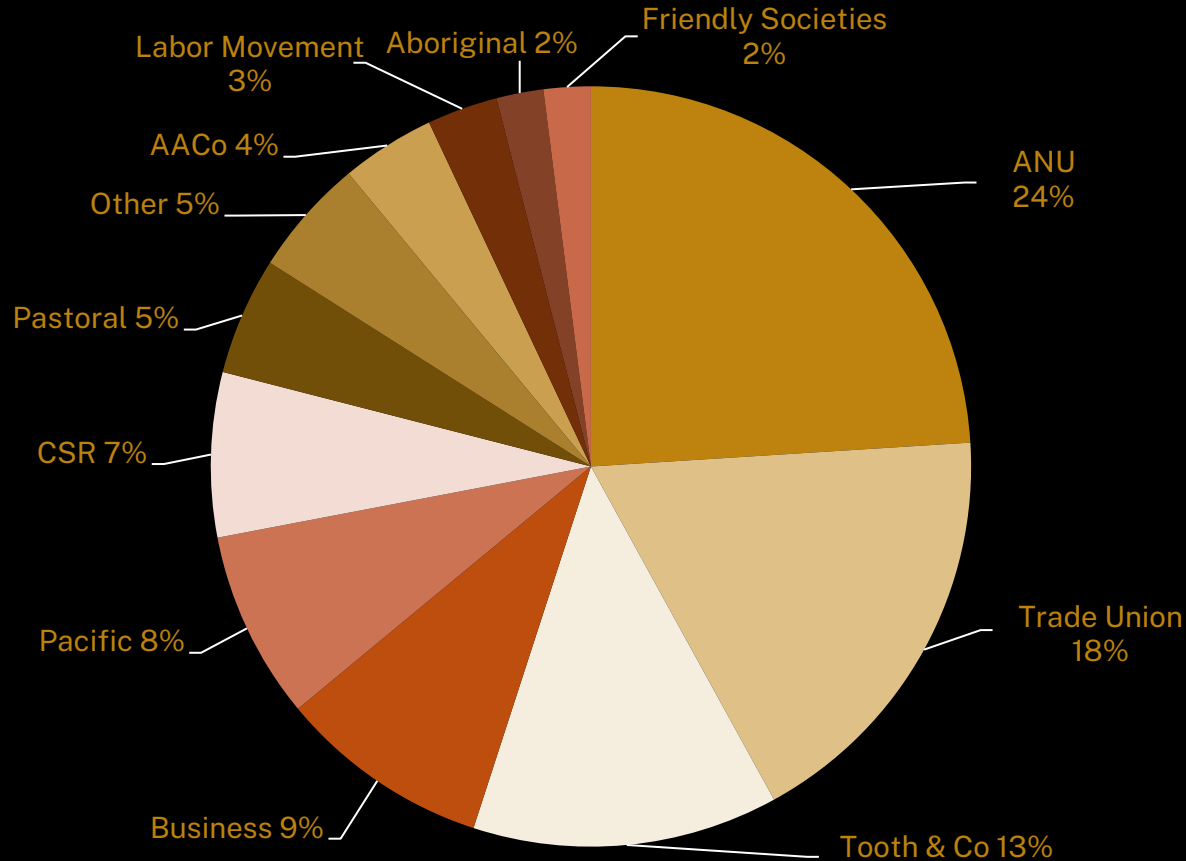
Australian
National
University

OUR USERS

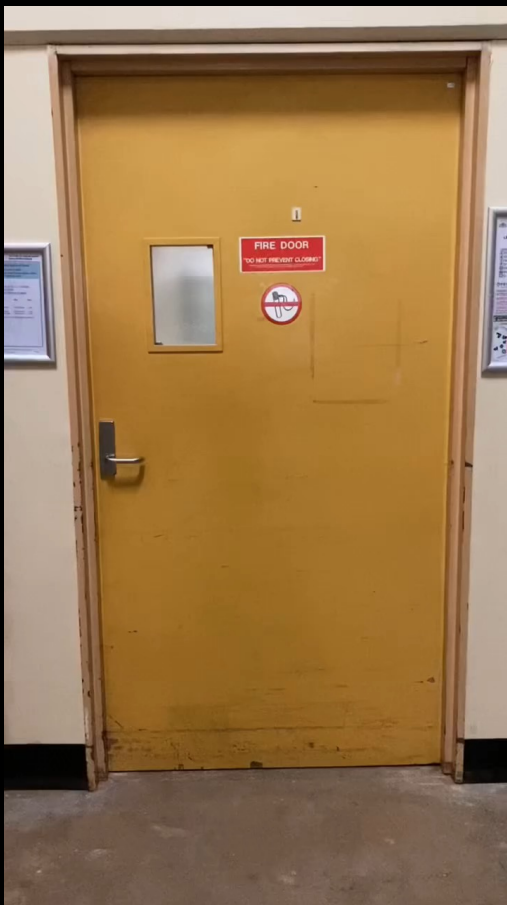


Australian
National
University

OUR USERS



Australian
National
University



ENGAGING WITH THE PUBLIC

Digitisation
Exhibitions
Social media
Collections



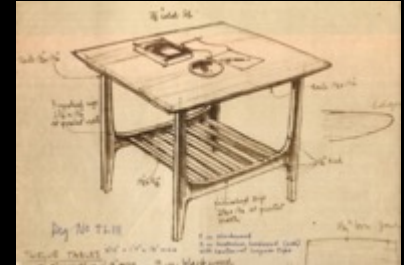
DIGITISATION



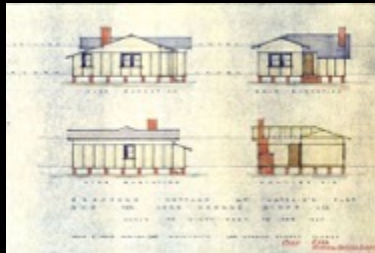
Maritime Union of Australia
10,000 photos, negatives & slides
c. 1920s-2000s



Adelaide Steamship Company
1,000 photos
c. 1913-1965



ANU Design Unit
70 drawings & photos
c. 1950s-1970s



Lake George Mines
120 plans and maps
c. 1890s-1960s



Dunlop Rubber Co
300 photos
c. 1900s-1950s



Squire's Brewery
Only known surviving record of Brewery
1828-1829



DIGITISATION

Colonial Sugar Refining Co (CSR)

Key digitisation project for 2023
20,000 photos & 3,000 staff records
c. 1850s-1980s



DIGITISATION

Aboriginal records

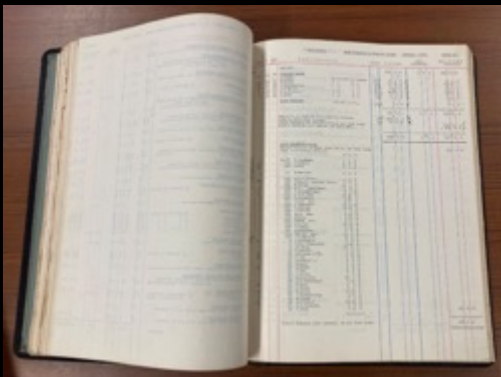
Key digitisation project for 2023
Wages records, welfare payment forms, ration
books, correspondence & photos
1920s-1970s



A page from a handwritten ledger or ration book. The page is filled with columns of text, likely representing names, dates, and amounts. The handwriting is in dark ink on aged, yellowed paper.



A typed form titled "SEARCH FOR WAGES RECORDS, WELFARE PAYMENT FORMS, RATION BOOKS, CORRESPONDENCE & PHOTOS". The form contains several sections with checkboxes and fields for data entry, including "SEARCHED", "INDEXED", "SERIALIZED", and "FILED". It also includes a section for "SEARCHED BY" and "DATE".



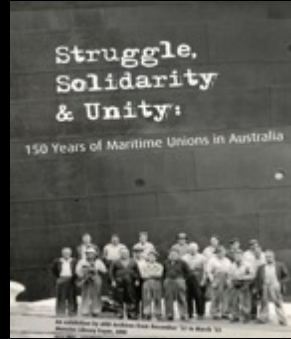


EXHIBITIONS

Key exhibitions in 2023

Citing Ourselves

Collaboration with the ANU College of Asia & The Pacific to tie in with the To Hell With Drowning Conference.



Struggle, Solidarity & Unity: 150 Years of Maritime Unions in Australia



Australian National University

SOCIAL MEDIA

Facebook
Instagram
X (Twitter)



76,483

People reached

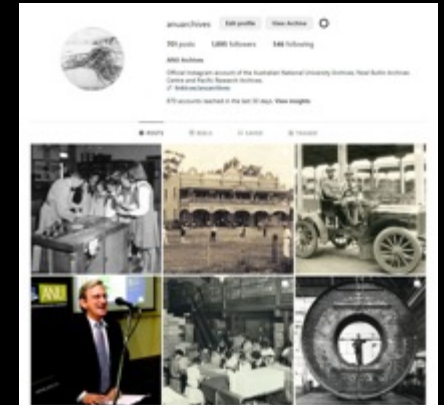
8,594

Engagements

Boost post

225

118 comments 238 shares



MEDIA

Long before the Voice to Parliament, Stephen and Helen Wurm wanted to hear what Aboriginal people had to say

By Tracy Klein
 Posted Sun 9 Jul 2012 at 9:27 AM, updated Sun 9 Jul 2012 at 11:06 AM



The search for the previous owner of this 1978 Holden can lead to the discovery of the story of two migrants who dedicated much of their lives to preserving Indigenous culture. (ABC News: Tracy Klein)

ABC News – photos & film of Stephen Wurm & Helen Groger-Wurm

Example of Tooth & Co hotel photos used on hotel website – Court House Hotel, Boorowa

3. HISTORY

This section of the report reviews existing documentation (such as the Conservation Management Plan prepared in 1981 and 2002) for the Irving Street Brewery Precinct, and summarises the historical background to the development of the precinct. Further research has been undertaken at the Kent Bustin and Powerhouse Museum archives.

3.1. EARLY OWNERSHIP AND DEVELOPMENT OF THE AREA

The subject site was part of a grant of land to Felix Wilson in 1841, part of the Military Gardens Subdivision.¹ The Military Gardens had been set up at Parramatta Street, the major route to Parramatta, in the early years of the Colony, to enable military officers to experiment their talents for growing vegetables and keeping livestock.² The Gardens were subdivided in the 1830s into five large lots, which were soon further subdivided into residential lots.

Nearby, the western part of Major George Druill's land grant was purchased in 1834 by John Tooth and his brother-in-law Charles Nevenhan, who established the Kent Brewery on it during the following year.

The Military Gardens Subdivision was developed with a mix of working class housing, shops and small industries, and by the mid 19th century was considered a slum.³ Various Council ordinances led to the demolition of the cottages in Linden Lane during the 1870s. The Kent Brewery gradually expanded its operations by acquiring several adjacent sites and demolishing the houses. By 1892 its site had grown to more than 2 acres (2.2 hectares).⁴



Figure 21. Kent Brewery in the late 1890s. Source: The Australian National Archives, 48142

NSW Government – photos of Kent Brewery

est 1853

Established in 1853 as The Crown before being reconstructed in 1948 by The Court House Hotel, the Courty has the same old-fashioned charm. While in recent years, the pub has been restored and modernised, the historic character has been preserved. From artwork, architectural statements including glass block windows and the bar, there are still prominent elements of the pub's charm and history.

Placed just before the roundabout, overlooking onto the centre of the street with other historic buildings, the Courty has always been the heart of the town.

488 Pitt Street, Sydney NSW 2000 | The Sydney Heritage Trust | 02 9222 2222

488 Pitt Street, Sydney NSW 2000 | The Sydney Heritage Trust | 02 9222 2222

Orszagut HÍRLETÉK ÉS TUDOMÁNYOS KÖZLEMÉNYEK

HÍRLETÉK ÉS TUDOMÁNYOS KÖZLEMÉNYEK

January 10, 2023

And I will not be a Romanian soldier!

OTVÁRKA BUDAPEST

In the Romanian world, the trials that befell his grandfather and father, the generation of self-employed industrialists, and the threat of a forced labor camp.

Orszagut (Hungarian Newspaper) – photo of Lajos Kazar

The Canberra Times

Australian National University's university house was one on the rare places to see the fusion of theory of design and practice, where the architecture and human work together for a unified design.

Fred Ward designed many pieces for the anatomy – from bookshelves to dining tables – which are now highly desirable.

Canberra Times – University House photos



COLLECTIONS

WHAT HAVE WE PROCESSED IN 2023?

Patrick Troy
(Urban Planner)

PARSA

ACT Teachers' Federation

Forestry Australia

Ann Curthoys
(Historian)

Ralph Bulmer
(Ethnobiologist)

Australian Agricultural Company

Andree Rosenfeld (Archaeologist)

Dr Roy Scragg (Public
Health Administrator)

National AIDS Archive Commonwealth
Government Records

Rhys Gardner (Botanist)

Hank Driessen (Historian)

Richard Eves
(Anthropologist)

Aubrey Parke (Archaeologist)

Business & Professional Women Australia



WHAT'S NEXT?

A/V Digitisation Project

Other Key Digitisation Projects

- Richard Eves' Posters, c. 1980s
- HIV / AIDS & Public Health Posters, c. 1980s
- Friendly Society Photos & Certificates, c. 1860s-1980s
- AMP Photos, Certificates & Plans, c. 1840s-1980s
- Tooth & Co Hotel Photos, c. 1950s-1970s
- Newcastle Land Sale Posters, c. 1900s-1930s

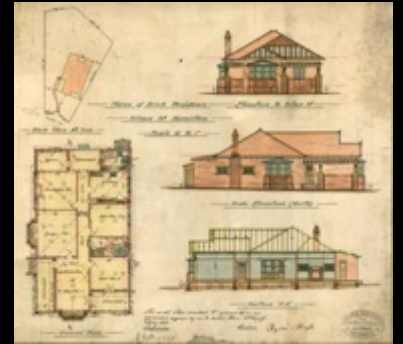


WHAT'S NEXT?

Exhibitions

200 Years of the Australian
Agricultural Company

100 Years of
Mt Stromlo
Observatory



175 Years of AMP

