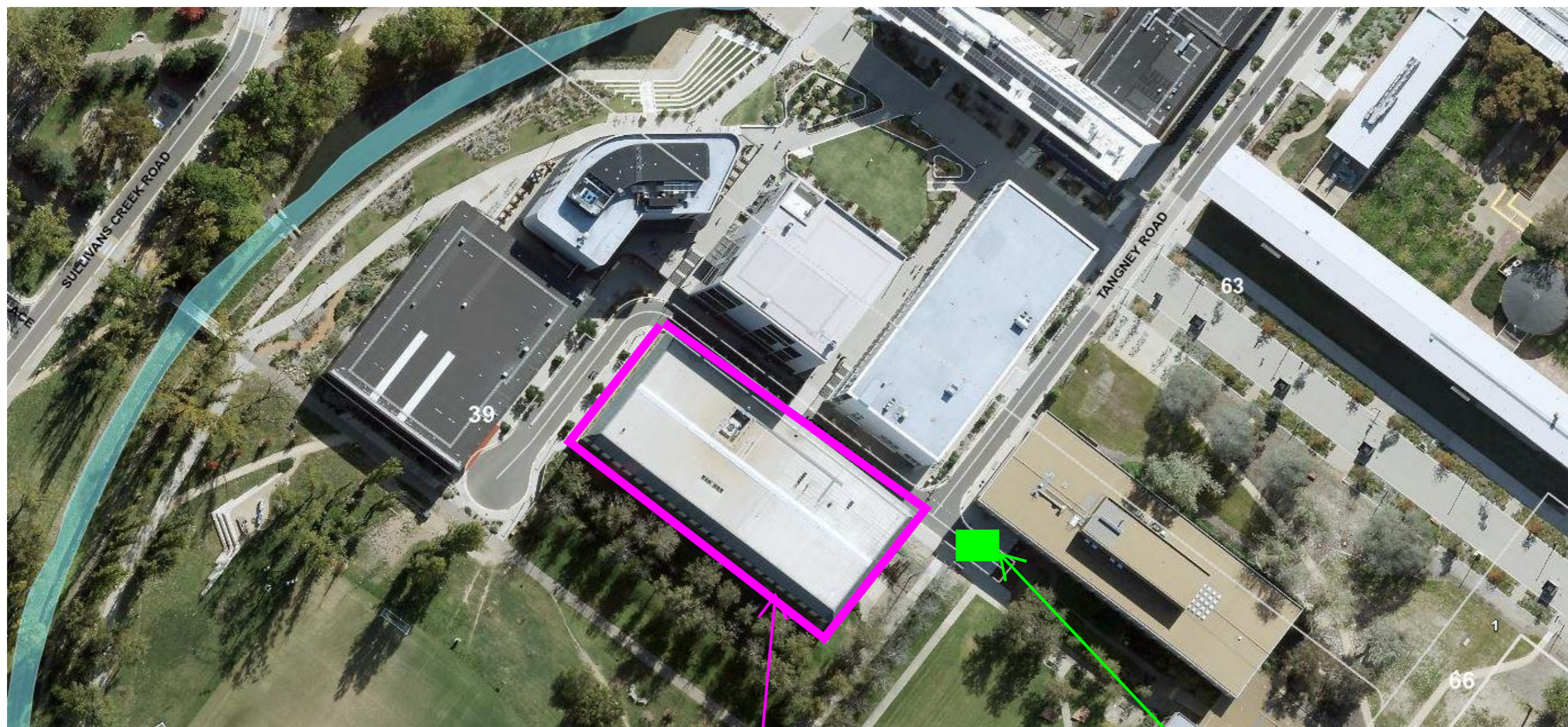


Building 15 J.B Chifley Library - Hail Remediation

Week 4 Site Activities 10/10 - 14/10



Perimeter scaffolding installation to the balcony and grass area. Joplin lane side installation to be early in the morning with the quite areas continuing from 9:00am

CRANE LOCATION 2 TO ASSIST WITH LOADING SCAFFOLDING ON TUESDAY 11/10

Spandrel panel removal and waterproofing via mobile boom lift. Joplin lane side installation to be in early in the morning with the quite areas continuing from 9:00am